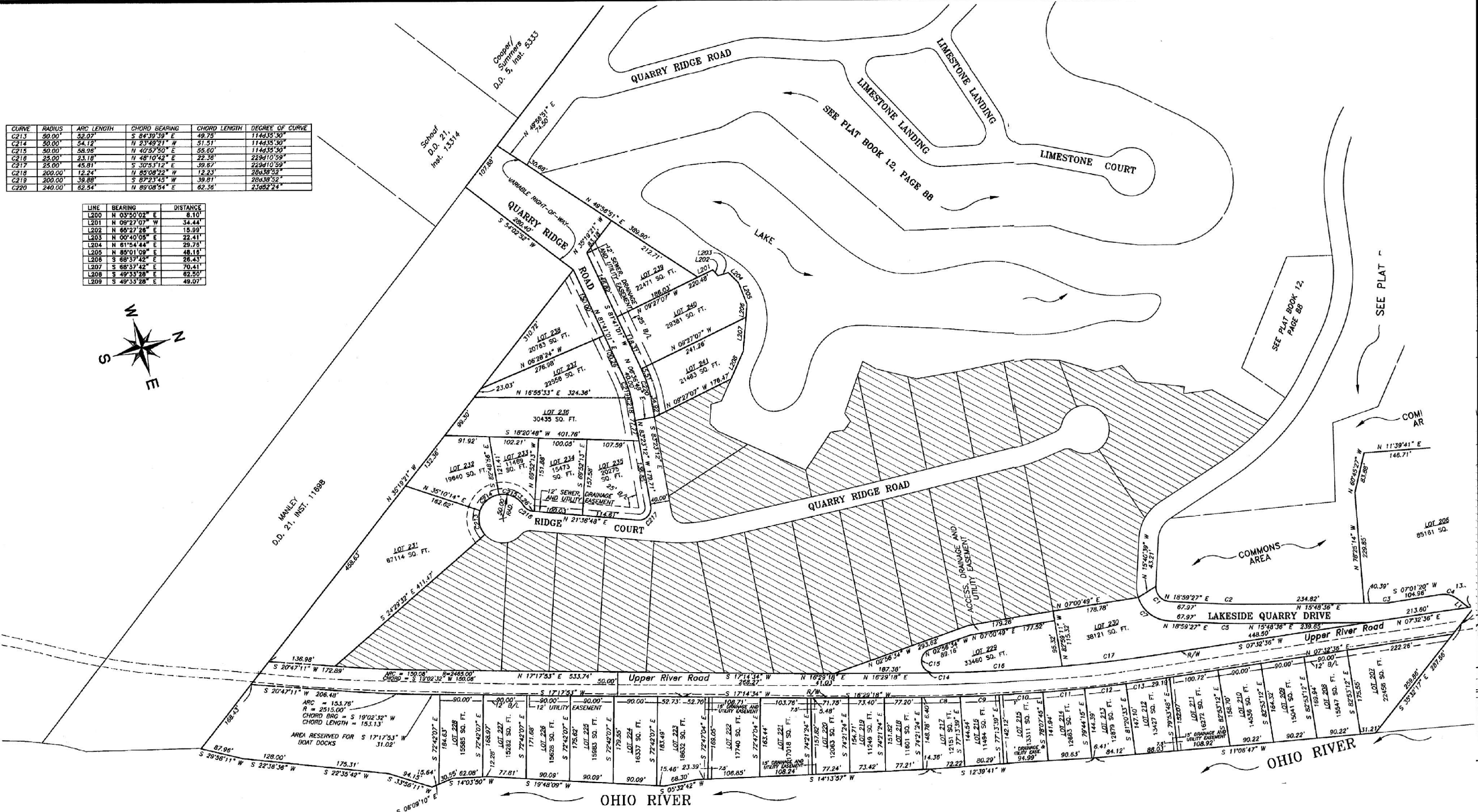


CURVE	RADIUS	ARC LENGTH	CHORD BEARING	CHORD LENGTH	DEGREE OF CURVE
C213	50.00'	32.07'	S 84°39'39" E	48.75'	114433.30°
C214	50.00'	54.12'	N 23°49'21" W	51.51'	114433.30°
C215	50.00'	58.95'	N 40°57'50" E	55.60'	114433.30°
C216	25.00'	23.18'	N 48°10'42" E	22.38'	229410.59°
C217	25.00'	45.81'	S 30°53'12" E	39.67'	229410.59°
C218	200.00'	12.24'	N 85°08'22" W	12.23'	286395.52°
C219	200.00'	38.88'	S 87°23'43" W	39.81'	286395.52°
C220	240.00'	62.54'	N 89°08'54" E	62.56'	258622.74°

LINE	BEARING	DISTANCE
L200	N 03°50'02" E	8.10'
L201	N 09°27'07" W	34.44'
L202	N 66°27'26" E	15.99'
L203	N 00°40'05" E	22.41'
L204	N 61°54'44" E	29.75'
L205	N 89°01'09" E	48.11'
L206	S 88°37'42" E	26.43'
L207	S 88°37'42" E	70.41'
L208	S 49°33'28" E	62.50'
L209	S 49°33'28" E	49.07'



REVISIONS	
1	
2	
3	
4	

JACOBI, TOOMBS & LANZ, INC.
CONSULTING ENGINEERS
120 BELL AVENUE
CLARKSVILLE, INDIANA 47129
(812) 288-6646

DATE: _____
DRAWN: J.A.M.
CHECKED: J.H.T.
APPROVED: H.L.H.

QUARRY BLUFF ESTATES
BEING A REPLAT OF QUARRY BLUFF ESTATES
PLAT BOOK 12, PAGE 88

LPI INVESTORS, LLC

SCALE:
1" = 100'

JOB NUMBER:

SHEET:
3 of 3